



## GPSI-4000 Tracking Solution

### Features

- Expandable, highly customizable/configurable GPS tracking device
- Simple 3 wire install for basic tracking
- Includes capabilities for 3 input switches and 2 outputs (buzzer, etc.)
- Small and easily hidden, external antenna is a 1.5" puck
- Position locates from 3 seconds to once per hour (1 or 2 minute typical)
- Switches such as emergency lights may trigger more frequent updates
- Switches/sensors accommodate reports/alerts on PTO, temperature, etc.
- Optional switch "pod" allows up to 16 inputs/outputs
- Optional serial communications for laptop connectivity, customizations
- Optional bluetooth module allows connectivity to TomTom devices, etc.
- Optional Mobile Data Terminal support
- Available currently with any GPRS network (worldwide)
- Available soon with CDMA and IDEN networks
- Internal geofence capability allows for additional customization
- "Rapid Acceleration" and "Harsh Braking" reporting



### Technical Specifications/Miscellaneous

- 16 channel GPS (with WAAS)
- 3 meter CEP (with SA off) -- typically accurate to 5-15 feet
- Dallas iButton support for driver ID
- Optional support for NMEA GPS output (in-vehicle navigation)
- 2 built in LEDs for cellular and GPS status
- 3-wire harness included

### Global Coverage

(Canada is available through an alternate network provider)



- Complete Coverage
- No Current Coverage

### Standards

- SAE J1113, J1113
- MIL STD 810F and 202G

### Options

- Switches (3 included, up to 16 optional)
- Antenna options (stealth included)
- Bluetooth module for TomTom integration
- Geofence or switch-based customizations

### Accessories

- Switch assemblies
- Temperature Sensors
- Dual mode antenna (included)
- Tie wrap or screw mounts
- Custom cable assemblies
- External mount antennas

\*Typical in-coverage transmission from vehicle to First Mobile GPS takes 2-8 seconds. Update frequencies range from once per hour to once every 10 seconds, depending on needs, and affect monthly pricing. Up to 10,000 historical locations may be stored if a vehicle leaves a coverage area. These locations will be uploaded as soon as coverage is regained. For exact coverage in your area, please contact a First Mobile GPS representative.

Environmental	
Vibration/Shock	SAE J1455 US Military Standard 202G and 810F
Temperature	-30 / +65 C Operating, -40 / + 85 C storage
Humidity	95% RH @ 50 C non-condensing
EMC/EMI	SAE J1113

Power	
Power Source	9-32V DC
Consumption	< 500 mA at 12V (active) < 10 mA (sleep)

Pricing (quantities)	
Hardware	\$400, \$425, \$450, \$475, \$500, \$525 (quantities of 250, 100, 50, 25, 10, 1)
Service	\$32.95, \$39.95, \$49.95, \$54.95 per month (5, 2, 1, and half minute update frequencies)

This premium tracking product is easily installed with 3 wires, and allows customers to utilize our best of breed, dashboard driven, GPS tracking solution. With First Mobile GPS's vehicle tracking solution, your company will know where vehicles are at all times, where they have been for 3 years, if they have been speeding, idling, used off-hours, or at undesirable locations. Your customer visits will be easily quantified for billing justification or customer satisfaction. If switches or sensors are required, they may be wired to the GPSI-4000 (up to 5 or up to 16 with an expansion pod).

Our GPSI-4000 is a valuable addition to our line of tracking devices, which include Vehicle, Heavy Equipment, Trailer and Freight tracking solutions.



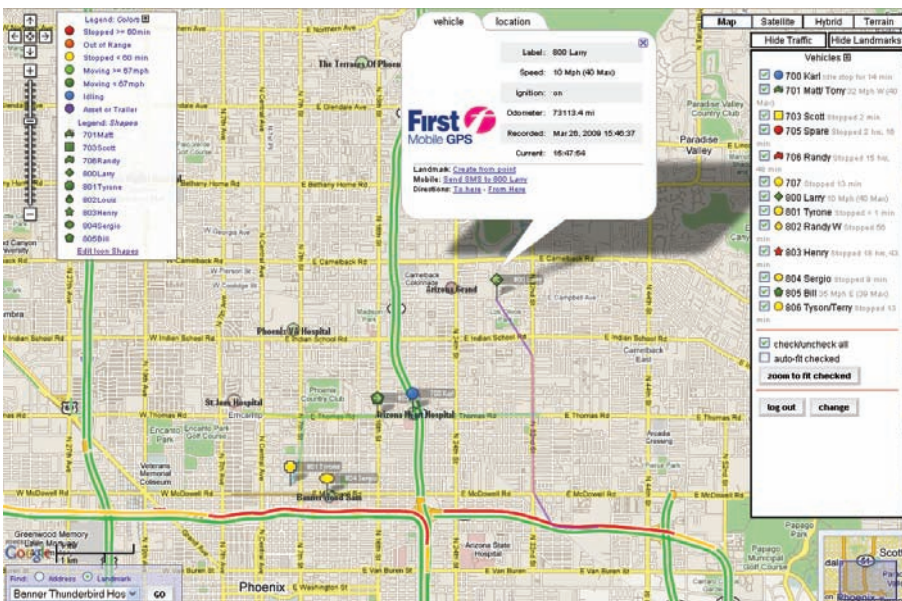
4.8" (L) x 3.3" (W) x 1.1" (H)



9 ounces



With expansion pod for switches and serial ports



## GPSI-4000 Add-ons

### *Plug-in Bluetooth Module*

- Plug and play addition to the GPSI-4000 GPS Tracking device
- Allows GPSI-4000 to use Bluetooth communications
- Bluetooth communications allows a data connection to Laptops
- TomTom Personal Navigation Devices may be integrated using Bluetooth
- Custom Bluetooth switches or sensors may be added with little wiring necessary

### *ioPOD Adapter*

- Increases the number of switches and sensors by 10 to 16
- Adds 2 RS-232 Serial Ports to the GPSI-4000
- Switches may be digital or analog inputs or outputs
- Serial Port may be used to stream NMEA GPS data to a laptop
- Serial Port may be used for Mobile Data Terminal integration
- Serial Port may be used for Laptop internet data transmission



Plug-in Bluetooth Module

*Using the optional First Mobile GPS accessories, virtually all custom requirements may be delivered. Up to 16 switches or sensors, 2 serial ports, and Bluetooth capabilities allow for the following types of requirements:*

- Concrete Pumping details
- Emergency Lights on/off reporting and speed comparisons
- Transmit next stop wirelessly to a TomTom Personal Navigational Device
- Send and receive reliable messages via a number of Mobile Data Terminals
- Connect a laptop to the internet via Serial or Bluetooth (additional data charges apply)
- Emergency panic button support
- Lock and Unlock doors, windows, etc.
- Disable Vehicle Starter (relay necessary)



Plug in I/O Pod Module